

MONTHLY MEMBERSHIP PROGRESS REPORT

LOCATION NEW ZEALAND

District 202 M

Results as of: 6/30/2022

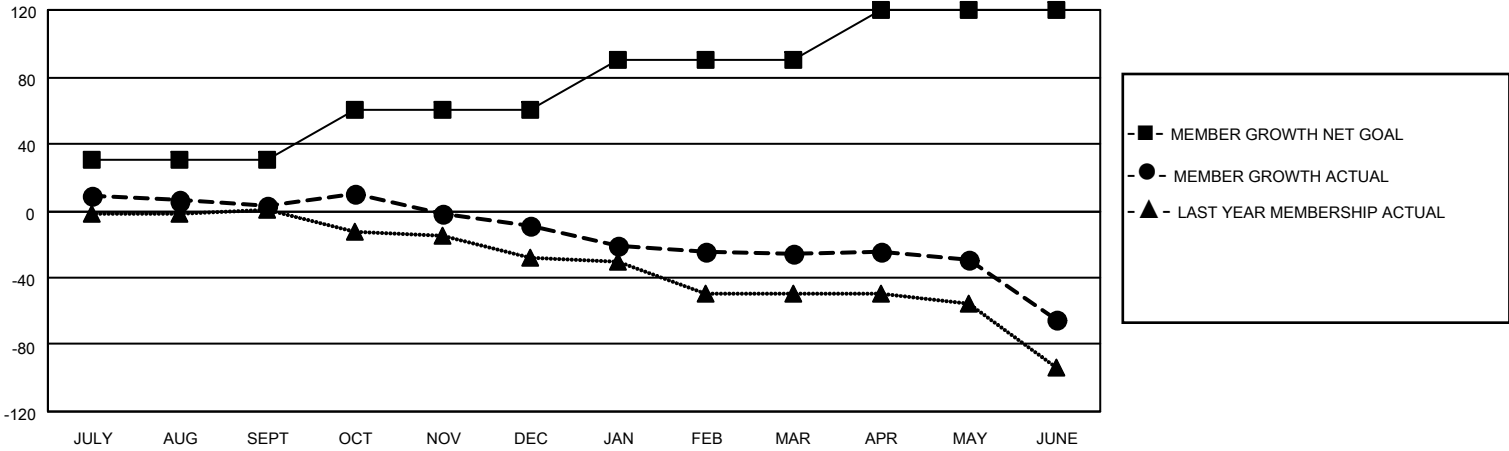
Clubs			
RESULTS FOR 2021-2022			
QUARTER	NEW CLUB GOAL	NEW CLUBS	DROPPED CLUBS
JULY/AUG/SEPT	0	0	1
OCT/NOV/DEC	0	0	0
JAN/FEB/MAR	0	0	0
APR/MAY/JUNE	0	0	0

Members			
RESULTS FOR 2021-2022			
QUARTER	MEMBER GROWTH NET GOAL	MEMBER GROWTH ACTUAL	DROPPED MEMBERS ACTUAL (including transfers)
JULY/AUG/SEPT	30	23	19
OCT/NOV/DEC	30	25	34
JAN/FEB/MAR	30	8	23
APR/MAY/JUNE	30	16	52

GOALS AND ACTUAL NEW CLUBS CUMULATIVE



GOALS AND ACTUAL MEMBERS CUMULATIVE



DROPPED CLUBS: 1	26 CLUBS OF 42 ADDED 1 OR MORE NEW MEMBERS	<p style="text-align: center;"><u>GENDER DISTRIBUTION</u></p> MALE 571 (62.07%) FEMALE 349 (37.93%) NON BINARY 0 (0.00%) PREFER NOT TO ANSWER 0 (0.00%)
<p style="text-align: center;"><u>DROPPED MEMBERS</u></p> DECEASED 19 CLUB CANCELLED 0 OTHER 109 <hr/> TOTAL 128	<p style="text-align: center;">CLICK HERE FOR CUMULATIVE MEMBERSHIP DATA</p>	TOTAL FAMILY UNIT MEMBERS 80 FAMILY MEMBERS PAYING HALF DUES 40